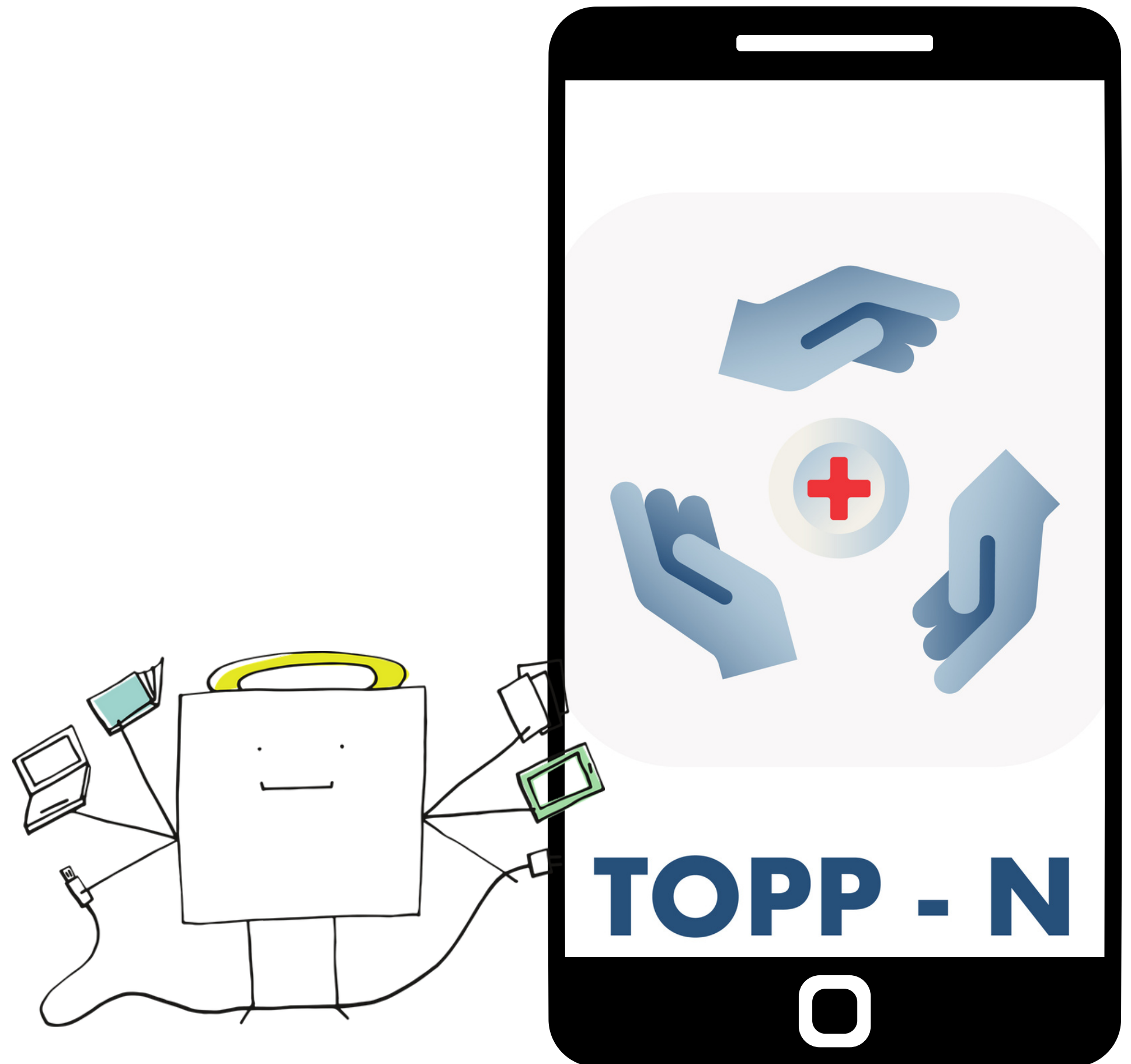
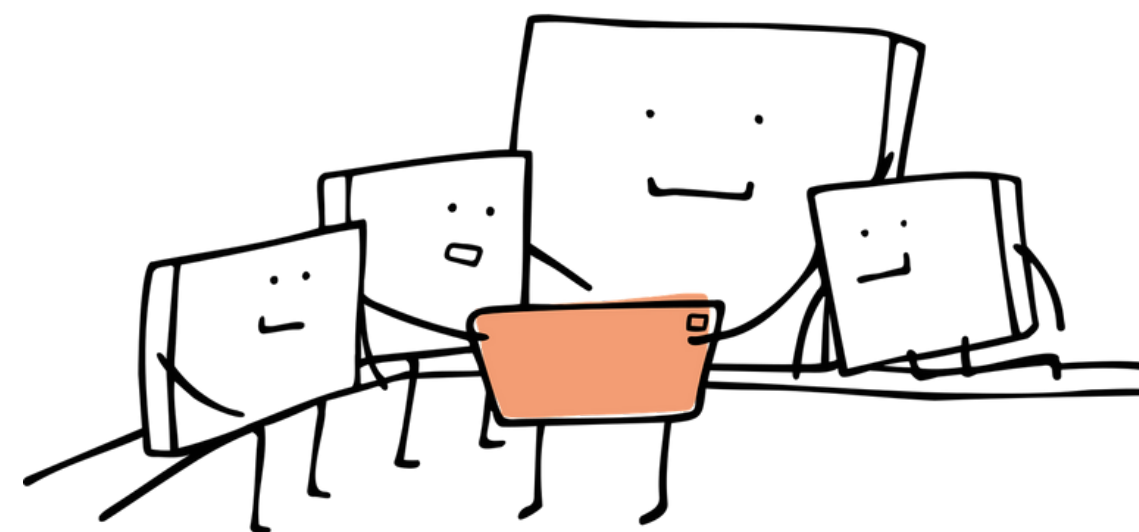
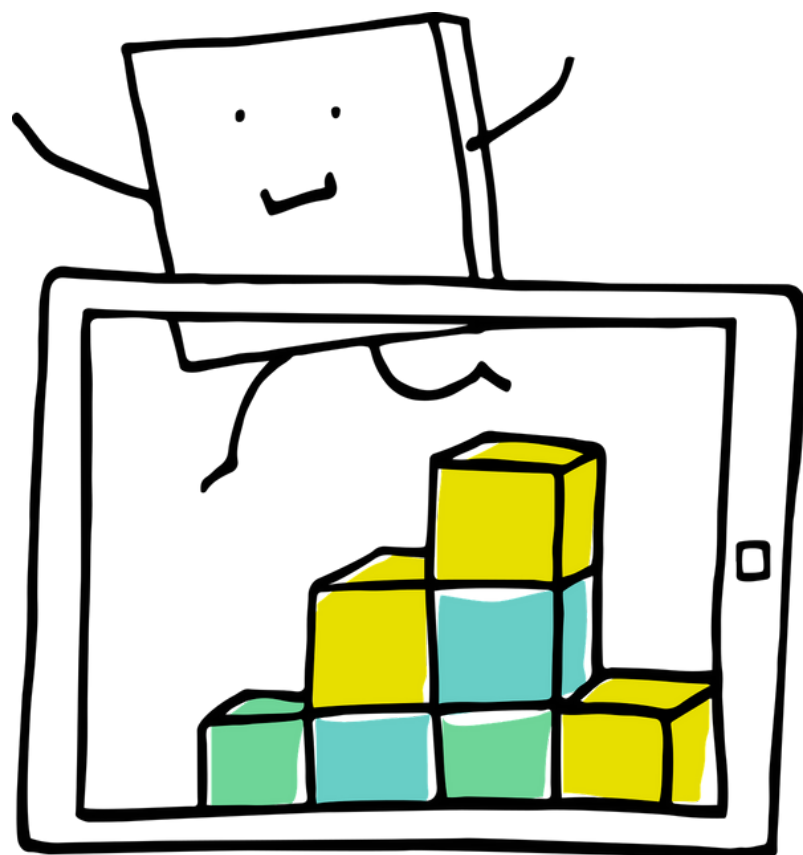


**"Fra prototype
til virkelighet"**

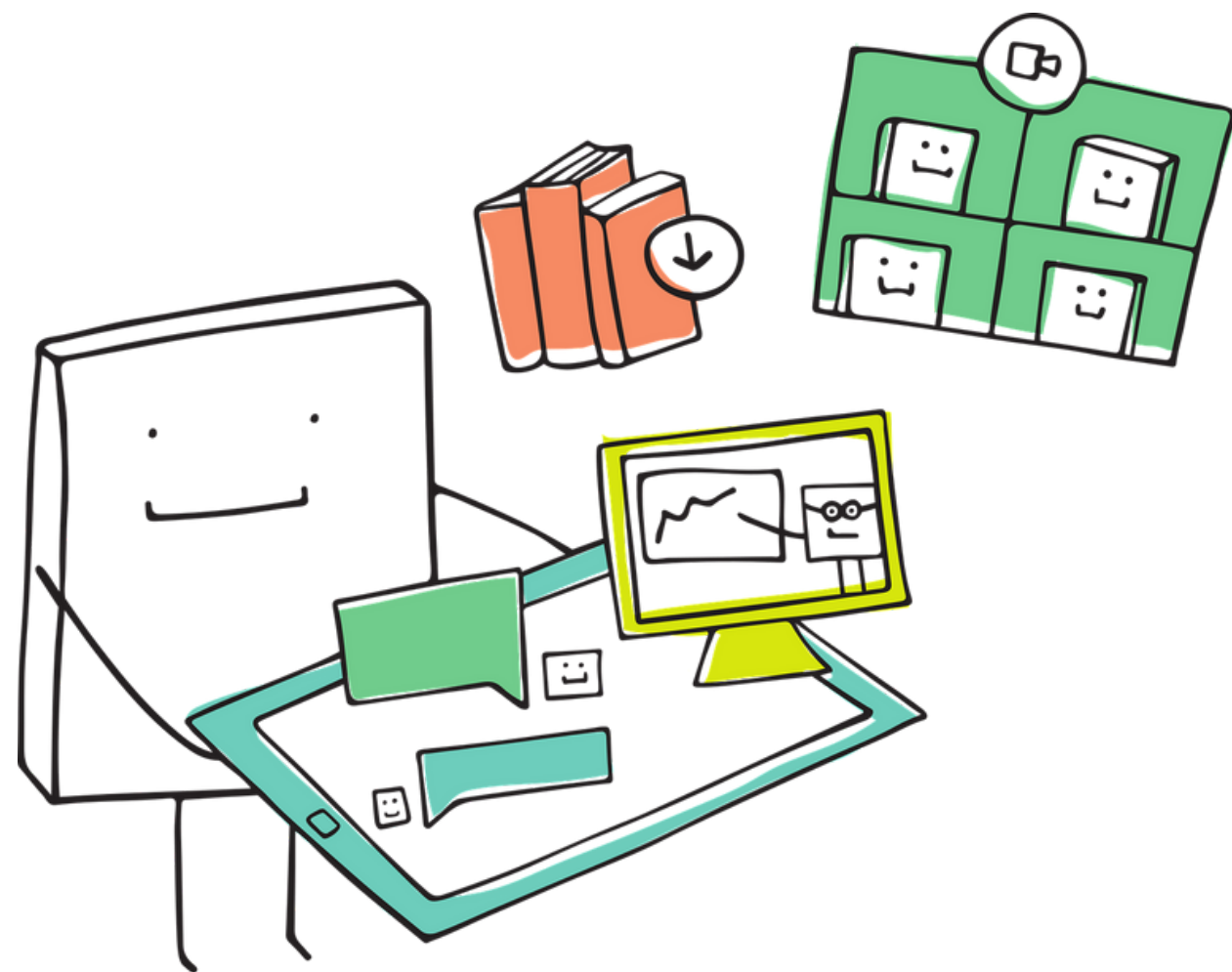
**Mulighetsstudiet
(feasability study)**

**Jaro Zlamal
PhD kandidat**



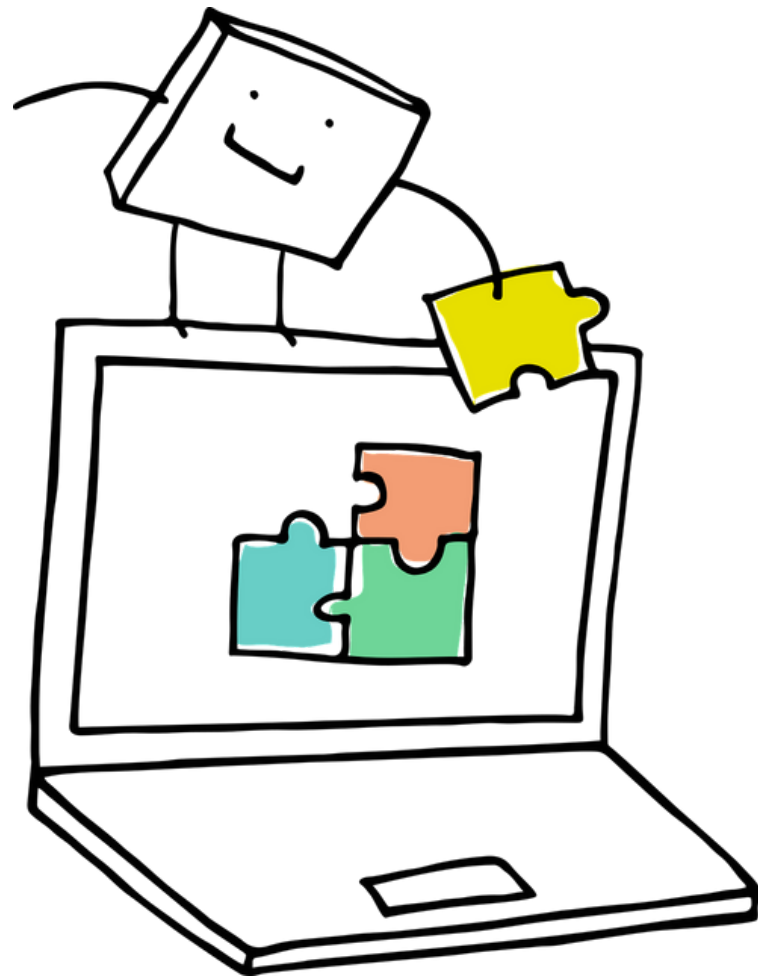


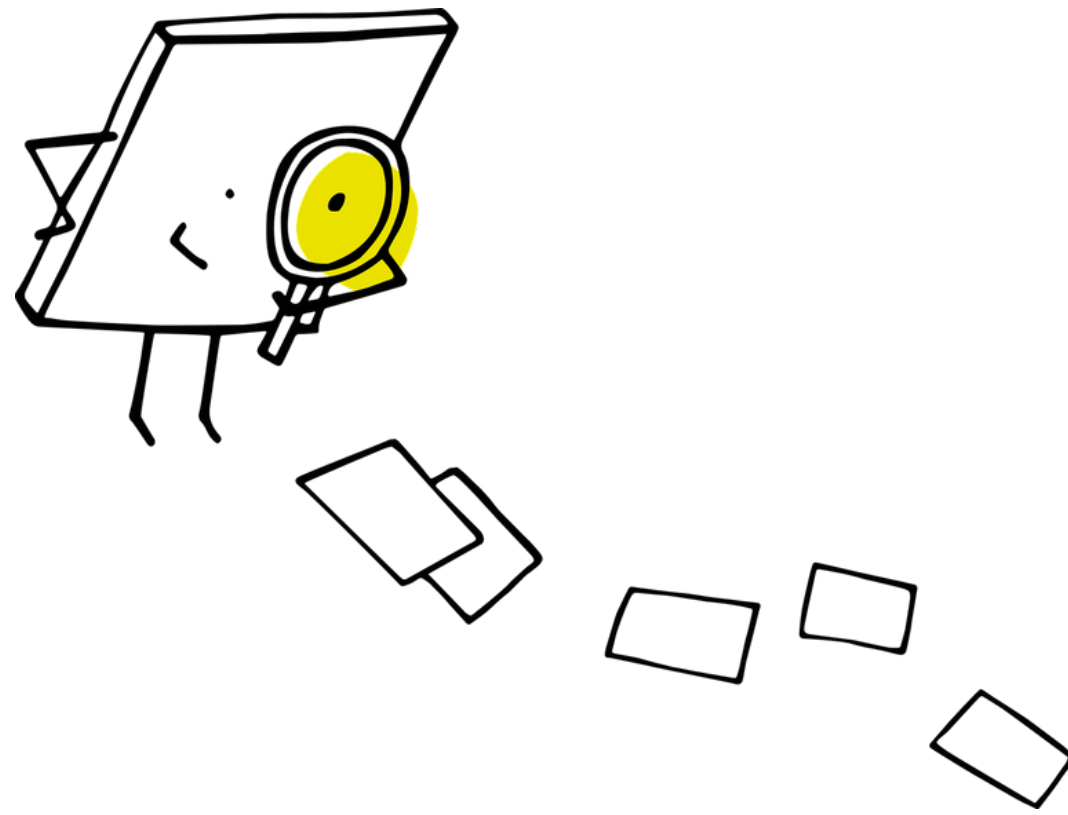
**Målet var å se hvordan TOPP-N
fungerer i en virkelig
setting**



**63 stk brukte TOPP-N
(sykepleiestudenter, veiledere
og lærere**

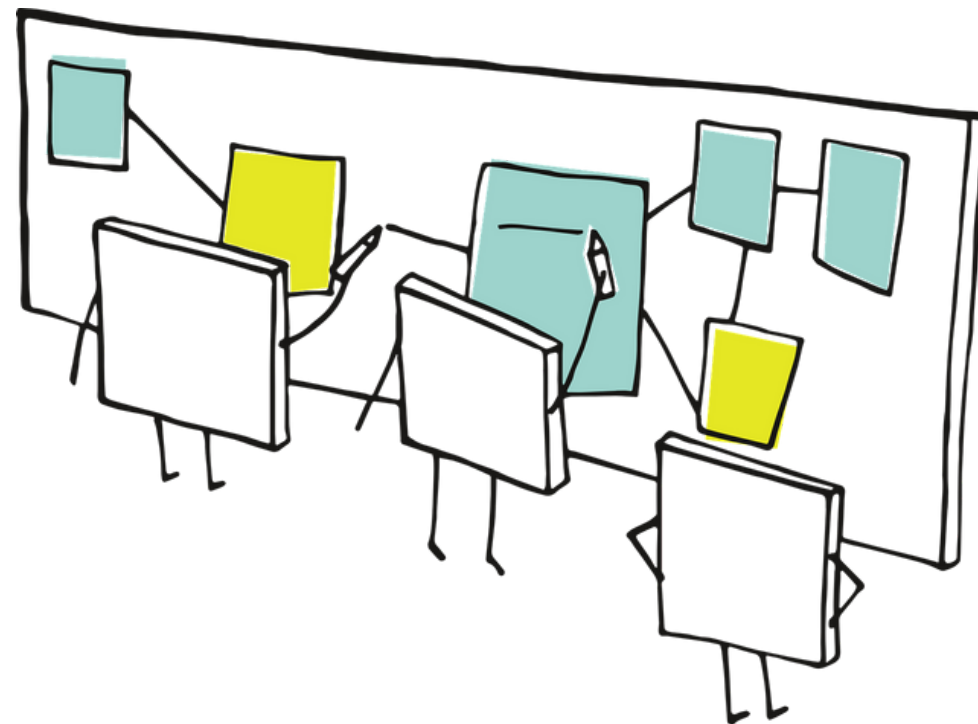
TOPP-N var brukt 6 uker på LDH og 8 uker på UiA



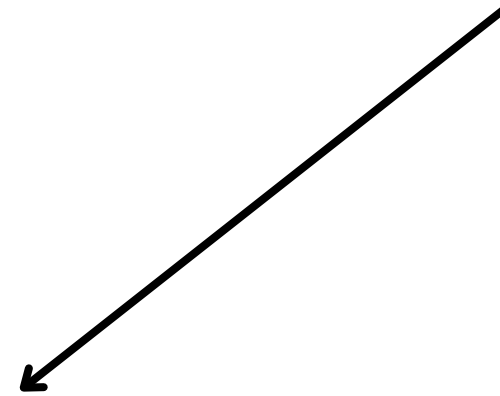


**Anonyme bruksdata viser at TOPP-N var
brukt 1-5 (2.93) ganger i uke 1 blant deltagere fra LDH
og 2-31 (17.5) ganger fra uke 2 til 6 blant deltagere fra LDH**

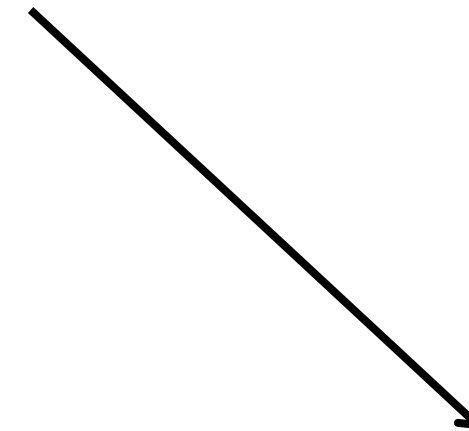
Resultater baserer seg på fokusgruppeintervjuer (14 deltagere) og anekdotiske data i form av tilbakemeldinger på mail eller Facebook gruppe



Faktorer som bidrar til at TOPP-N er gjennomførbart

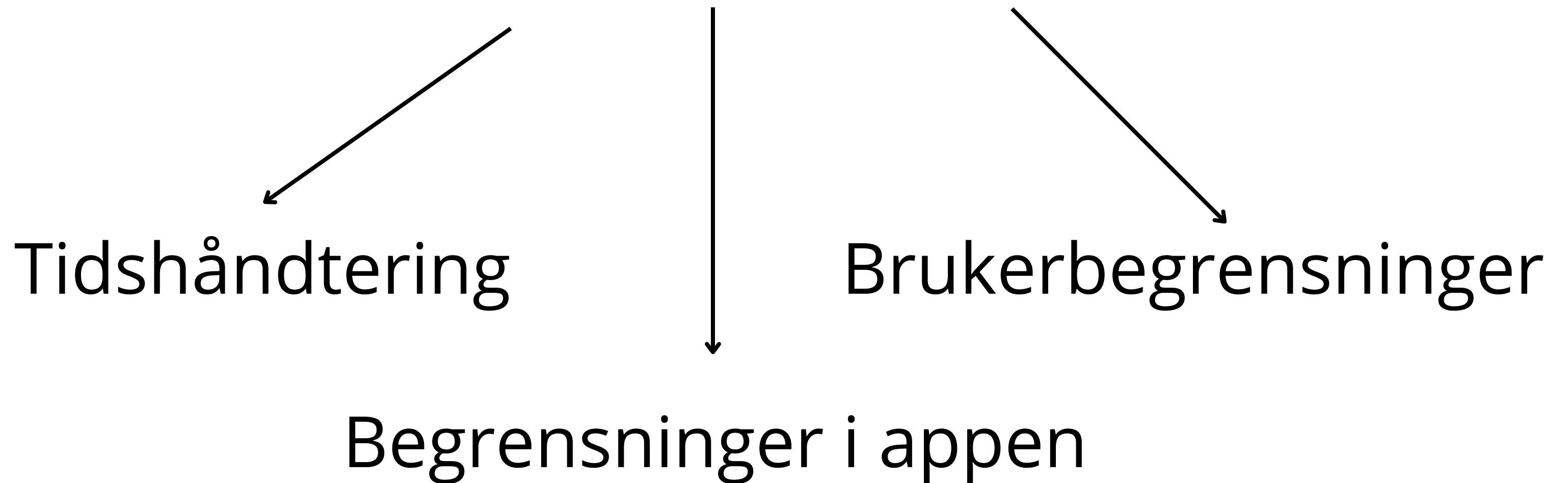


Definerte roller

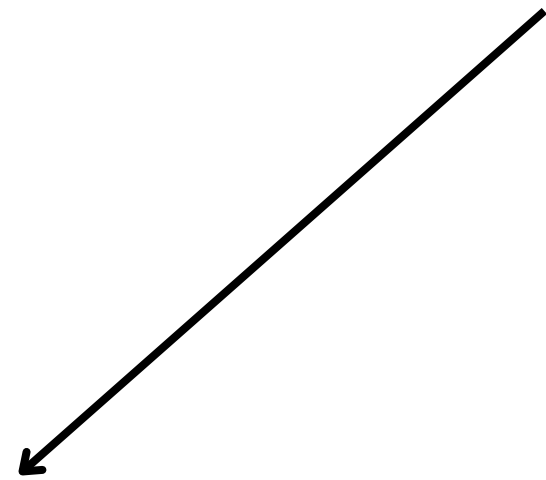


Brukervennlighet
av appen

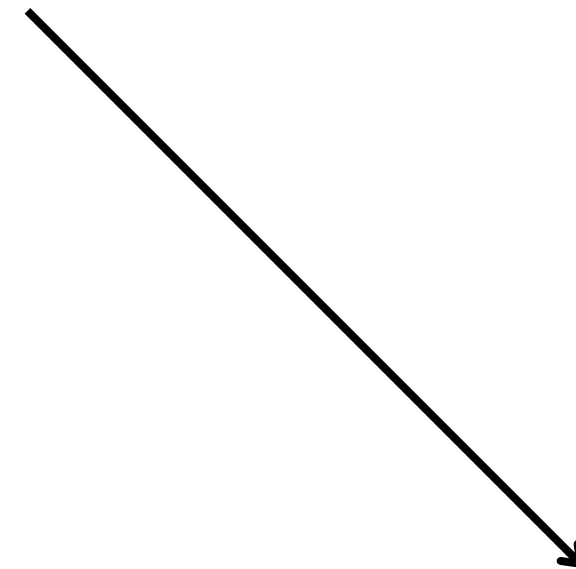
Utfordringer for gjennomførbarhet



Behov for videreutvikling



Behov for struktur



Kontinuerlig
forbedring av appen

Resultater på vei...

A Technology-Supported Guidance Model to Support the Development of Critical Thinking among Undergraduate Nursing Students in Clinical Practice: A Concurrent, Exploratory, Flexible, Multi-Method Feasibility Study

Jaroslav Zlamal; Edith Roth Gjevjon; Mariann Fossum; Simen A. Steindal; Andréa Aparecida Gonçalves Nes

Jaroslav.Zlamal@ldh.no