

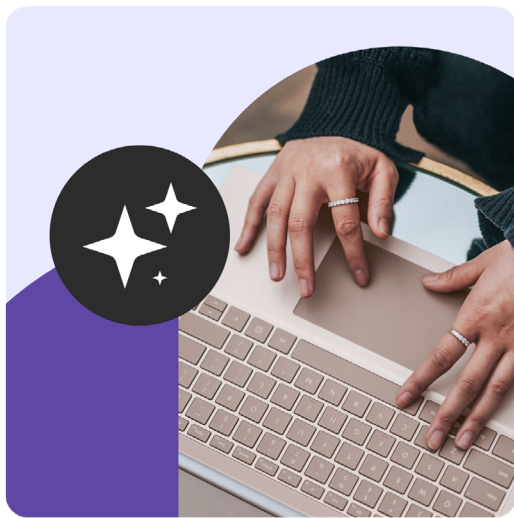


# Mentimeter's AI features

## AI Menti Builder

Accelerate presentation creation to seconds and save your users time. By leveraging the power of generative AI, Mentimeter users can generate interactive presentation drafts tailored to their specific needs and objectives, with just a prompt.

*This is the BETA version of the AI Menti Builder and we are committed to continually enhancing our AI-generated content to ensure it becomes more accurate.*



### Benefits of using the feature

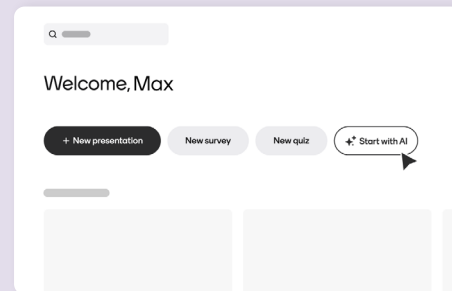
- **Easily get started:**  
Stuck on visualizing a great idea? Let the AI Menti Builder be your creative partner, providing a solid starting point.
- **Save hours of work:**  
Leverage the AI Menti Builder to streamline tasks and free up your schedule.
- **Enhance engagement:**  
Easily craft engaging presentations with popular Menti features such as word clouds, polls and quizzes.
- **For any occasion:**  
Whether you're hosting a workshop, team meeting, lecture, or town hall, the AI Menti Builder will create an engaging draft.

### How does it work?

Imagine you're organizing a workshop to brainstorm ways to better allocate resources within your team. Let the AI Menti Builder simplify the process:

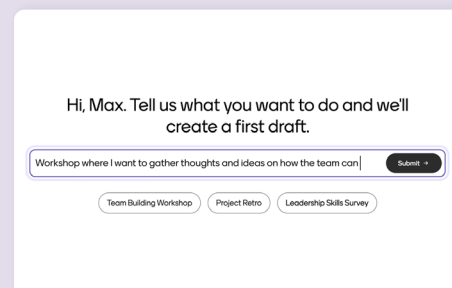
#### Step 1:

Go to "Home" and select "Start with AI".



#### Step 2:

Input the topic and what type of presentation you plan to have. There's no need for long, overly detailed prompts – a simple sentence specifying the presentation type and subject is enough.



#### Step 3:

Then choose a style for your presentation. Choose between Light, Dark, or Playful - you can always change this later. Voilà! You have an interactive draft tailored to your workshop, ready to customize.

### Useful links

[AI Menti Builder Home Page](#)

[How to use the AI Menti Builder](#)

[Learn more about how we work with AI at Mentimeter](#)

## AI Grouping

Say goodbye to the clutter and hello to a revolution in audience engagement. Gather responses from your audience with an open ended question and discover common themes with the click of a button, allowing you as a presenter to get an overview of everyone's opinions no matter the amount of answers!



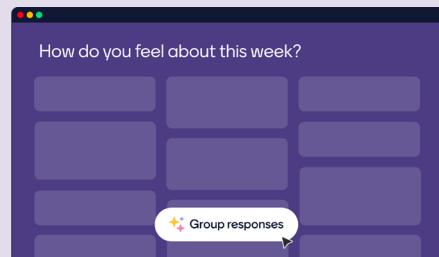
### Benefits of using the feature

- **Enhanced audience engagement:**  
Highlights key themes, keeping the audience engaged and informed.
- **Efficient meetings/lectures:**  
Saves time by automatically sorting and categorizing responses, allowing you to focus on presentation delivery.
- **Impactful learning:**  
Facilitates real-time response processing and display, enhancing live session interactivity.
- **Improved data organization:**  
Automatically categorizes responses and efficiently manages large volumes of data, ideal for sessions with many participants.
- **Customizable grouping criteria:**  
Allows customization of grouping criteria to align with specific presentation goals.

### How does it work?

Ever been in a situation where you collect a lot of valuable insights and feedback, but have to spend time trying to make sense of it all? With AI Grouping, you can group and label your audience's input in the moment, gain better clarity, understand the common themes, and easily drive action right away.

Once this feature has been enabled (see more below) a button will appear saying "Press Space to group responses".



The presentation data is then analyzed and will be displayed as thematic clustered groups.

**Note:** There must be at least 11 responses in an Open Ended slide in order for the button to appear. Group names or labels will be assigned automatically. You can change group names manually, and you can also reassign responses to another group manually.

### Useful links

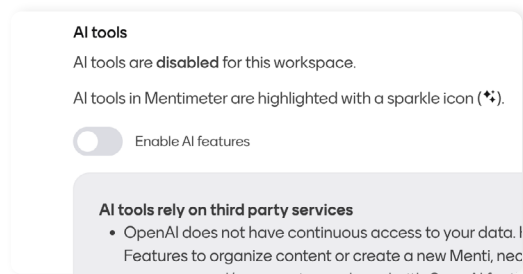
[How to use AI grouping](#)

[The Future of Workshops with AI Grouping](#)  
[Learn more about how we work with AI at Mentimeter](#)

## How to enable AI features

For Pro and Enterprise users, the workspace owner must be the one to [enable this feature](#).

Team workspace owners should go to the "Team Settings" menu. Look for the "Enable AI Tools" button and toggle it on. You'll be prompted to accept OpenAI as a sub-processor. Make sure to read and agree to this before proceeding.



## FAQ

### What's OpenAI's Role in this?

We use OpenAI (LLM: gpt-4o, Embeddings: V3) technology to power Mentimeter's AI features. You can disable your use of the OpenAI powered features at any time in your workspace settings.

### Will my data be shared with OpenAI?

Data will only be sent to OpenAI from the specific Menti's where you use AI features. There will be no transfer of data to OpenAI from idle presentations in the workspace and if you have disabled the features, nothing will be sent to OpenAI. We have configured our use of OpenAI to ensure that your data will not be used to train or improve the OpenAI model.

### What data is shared with OpenAI when using Menti Builder?

The prompt and the generated Menti presentation is stored which means that OpenAI doesn't have access to an updated version of the Menti or if it receives

responses. The original Menti generated will be deleted by OpenAI in accordance with OpenAI data retention policies. OpenAI does not continuously monitor or access the results of slides created using Menti Builder.

### What data is shared with OpenAI when using AI Grouping?

When you engage the AI Grouping feature or any AI-enabled functionalities within the platform, there's a specific instance of data sharing where the question and its response are shared with OpenAI. This isn't about granting OpenAI ongoing access to your data but rather about sharing specific inputs to leverage AI capabilities effectively. With AI Grouping, the relevant question and its outcome are shared with OpenAI and will be deleted by in accordance with OpenAI data retention policies.

### How long does OpenAI store the data that is transferred to them?

Our AI features are powered by OpenAI's API which means that any data sent via the API will be removed from OpenAI's systems after 30 days.

### How do you guarantee that data submitted by Mentimeter to OpenAI will not be used to train OpenAI's algorithms?

In accordance with OpenAI's terms, data from the API platform isn't used for training the OpenAI models.

### What if I don't want to use AI features?

The features are optional and will be available for your workspace, but disabled by default. This means that prior to using these features, you will need to actively consent to such use. The Owner(s) of your workspace can toggle the OpenAI powered features on/off for the workspace, and you can change this at any time in the workspace settings.